

Planet-forming disks evolve in surprisingly similar ways

The demographics of hundreds of planet-forming disks within a thousand light-years reveal how their masses vary with age

A group of astronomers, led by Sierk van Terwisga from the Max Planck Institute for Astronomy, have analysed the mass distribution of over 870 planet-forming disks in the Orion A cloud. By exploiting the statistical properties of this unprecedented large sample of disks and developing an innovative data processing scheme, they found that far away from harsh environments like hot stars, the decline in disk mass only depends on their age. The results indicate that at least within the neighbouring 1000 light-years, planet-forming disks and planetary systems evolve in similar ways.

Some of the most exciting questions in present-day astronomical research are: What do other planetary systems look like? How comparable is the Solar System to other planetary systems? A team of astronomers have now contributed crucial clues to solving this puzzle. *“Up to now, we didn’t know for sure which properties dominate the evolution of planet-forming disks around young stars”*, says Sierk van Terwisga, who is a scientist at the Max Planck Institute for Astronomy in Heidelberg, Germany. He is the lead author of the underlying research article published in *Astronomy & Astrophysics* today. *“Our new results now indicate that in environments without any relevant external influence, the observed disk mass available for forming new planets only depends on the age of the star-disk system”*, van Terwisga adds.

The disk mass is the key property when studying the evolution of planet-forming disks. This quantity determines how much material is available to be transformed into planets. Depending on the disk age, it may also provide clues about the planets already present there. External effects like irradiation and winds from nearby massive stars obviously impact the disk survival. However, such environments are rare, and those processes do not reveal much about the disks themselves. Instead, astronomers are more interested in internal disk properties such as age, chemical composition, or the parental cloud dynamics from which the young stars with their disks emerged.

To disentangle the various contributions, the team of astronomers selected a large and well-known region of young stars with disks, the Orion A cloud. It is approximately 1350 light-years away from Earth. *“Orion A provided us with an unprecedented large sample size of more than 870 disks around young stars. It was crucial to be able to look for small variations in the disk mass depending on age and even on the local environments inside the cloud,”* Álvaro Hacar, a co-author and scientist at the University of Vienna, Austria, explains. The sample stems from earlier observations with the Herschel Space Telescope, which permitted identifying the disks. Combining several wavelengths provided a criterion to estimate their ages. Since they all belong to the same cloud, the astronomers expected little influence from chemistry and cloud history variations. They avoided any impact from massive stars in the nearby Orion Nebula Cluster (ONC) by rejecting disks closer than 13 light-years.

To measure the disk mass, the team employed the Atacama Large Millimeter/Submillimeter Array (ALMA) located on the Chajnantor Plateau in the Chilean Atacama Desert. ALMA consists of 66

parabolic antennas, functioning as a single telescope with a tunable angular resolution. The scientists applied an observing mode that allowed them to target each disk efficiently at a wavelength of about 1.2 millimetres. The cold disks are bright in this spectral range. On the other hand, the central stars' contribution is negligible. With this approach, the astronomers determined the disks' dust masses. However, the observations are insensitive to objects much larger than a few millimetres, e.g. rocks and planets. Therefore, the team effectively measured the mass of the disk material capable of forming planets.

Before calculating the disk masses, the astronomers combined and calibrated the data from several dozens of ALMA telescopes. This task becomes quite a challenge when dealing with large data sets. Using standard methods, it would have taken months to process the collected data. Instead, the team developed a new method using parallel computers. *"Our new approach improved the processing speed by a factor of 900,"* co-author Raymond Oonk from the collaborating IT service provider SURF points out. The 3000 CPU hours required to finish the task and prepare the data for subsequent analysis elapsed in less than a day.

Altogether, Orion A contains planet-forming disks, each with dust amounting to up to a few hundred Earth-masses. However, from the 870 disks, only 20 hold dust equivalent to 100 earths or more. In general, the number of disks declines rapidly with mass, with a majority containing less than 2.2 Earth-masses of dust. *"In order to look for variations, we have dissected the Orion A cloud and analysed these regions separately. Thanks to the hundreds of disks, the sub-samples were still sufficiently large to yield statistically meaningful results",* van Terwisga explains.

Indeed, the scientists found minor variations in the disk mass distributions on scales of tens of light-years within Orion A. However, all of them can be explained as an age effect, meaning within a few million years, disk masses tend to decline towards older populations. Within the error margins, clusters of planet-forming disks of the same age cannot be distinguished by mass. It is not at all surprising to find the dust mass in planet-forming disks to decrease in time. After all, dust is one of the raw materials for planets. Hence, planet formation certainly reduces the amount of free dust. Other well-known processes are dust migration towards the disk centre and dust evaporation by irradiation from the host star. Still, it is surprising to see such a strong correlation between disk mass and age.

All those disks emerged from the same environment that now constitutes the Orion A cloud. How does this compare to other young star-disk populations? The astronomers addressed this question by comparing their results to several nearby star-forming regions with planet-forming disks. Except for two, all of them nicely fit the mass-age relation found in Orion A. *"Altogether, we think our study shows that at least within the next 1000 light-years or so, all populations of planet-forming disks show the same mass distribution at a given age. And they seem to be evolving in more or less the same way",* van Terwisga concludes. The result may even hint at the formation of stunningly similar planetary systems.

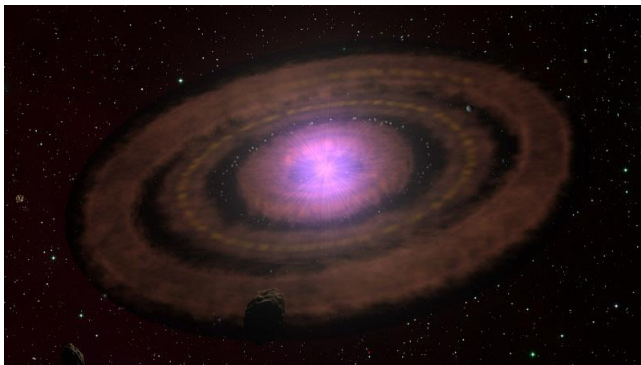
As a next step, the scientists will look at possible impacts from nearby stars on smaller scales of a few light-years. While they avoided the strong radiation field caused by the massive stars in the ONC, there are potentially fainter field stars that may affect the dust in neighbouring disks and alter the disk mass statistics. Such contributions may explain some of the deviations found in the disk mass to age relation. The results can help strengthen the overall picture of a planet-forming disk evolution dominated by age.

Additional information

The team consists of S.E. van Terwisga (Max Planck Institute for Astronomy, Heidelberg, Germany), A. Hacar (Department of Astrophysics, University of Vienna, Austria), E.F. van Dishoeck (Leiden Observatory, Leiden University, The Netherlands [LObs]; Max Planck Institute for extraterrestrial Physics, Garching bei München, Germany), R. Oonk (SURF, Leiden, The Netherlands; LObs; Netherlands Institute for Radio Astronomy (ASTRON), Dwingeloo, The Netherlands), and S. Portegies Zwart (LObs).

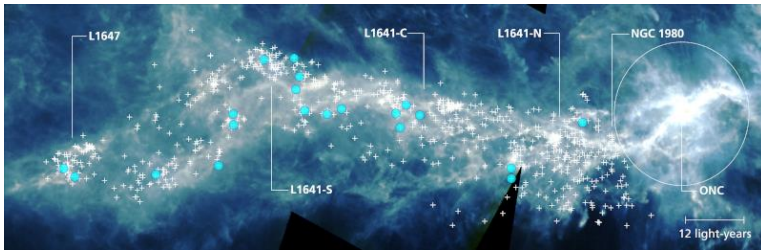
The Atacama Large Millimeter/Submillimeter Array (ALMA) is a partnership between the European Southern Observatory (ESO), the U.S. National Science Foundation (NSF) and the National Institutes of Natural Sciences (NINS) of Japan in cooperation with the Republic of Chile. ALMA is funded by ESO on behalf of its Member States, by NSF in cooperation with the National Research Council of Canada (NRC) and the National Science Council of Taiwan (NSC) and by NINS in cooperation with the Academia Sinica (AS) in Taiwan and the Korea Astronomy and Space Science Institute (KASI).

Images



This artistic impression illustrates what planet-forming disks around young stars often look like. They initially consist of dust and gas configured into rings of dense material. In time, the solid components grow into pebbles which eventually can evolve into planets. Since the ALMA observations used in this study are only sensitive to millimetre-sized dust grains, evolved disks with larger objects or even planets produce a relatively faint signal from the remnant material. The new results indicate that without external irradiation, such disks evolve similarly. After about a million years, most of them do not have enough mass to produce large planets like Jupiter. However, such planets may already have formed there.

Image: MPIA graphics department



This image depicts the giant Orion A star-forming cloud as observed by the SPIRE (Spectral and Photometric Imaging Receiver) instrument on-board the Herschel Space Telescope. It traces the large-scale distribution of cold dust. Orion A is about 1350 light-years away and consists of individual star-forming regions as indicated by their labels. The locations of planet-forming disks (+) observed with ALMA are indicated, while disks with dust masses above an equivalent of 100 earth masses appear as blue dots. The famous Orion Nebula, visible to the naked eye in the sky, hosts the Orion Nebula Cluster (ONC), including several massive stars emitting intense radiation.

Image: S.E. van Terwisga et al./MPIA

Links

SODA website: <https://emerge.univie.ac.at/results/soda-survey/>

SURF website: <https://www.surf.nl/en>

ALMA website: <https://www.eso.org/public/teles-instr/alma/>

Related articles

<https://www.mpia.de/news/science/2020-16-superearth?c=5313826>

<https://www.mpia.de/news/science/2021-02-matisse?c=5313826>

<https://www.mpia.de/news/science/2021-03-vlms?c=5313826>

<https://www.mpia.de/news/science/2021-12-maps?c=5313826>

<https://www.mpia.de/news/science/2021-14-transitiondisks?c=5313826>

Original article

S.E. van Terwisga et al., “Survey of Orion Disks with ALMA (SODA). I: Cloud-level demographics of 873 protoplanetary disks”, *Astronomy & Astrophysics* (2022). DOI:

<https://arxiv.org/abs/2202.11057>